

Find the Hardware Address for Wired & Wireless Connections

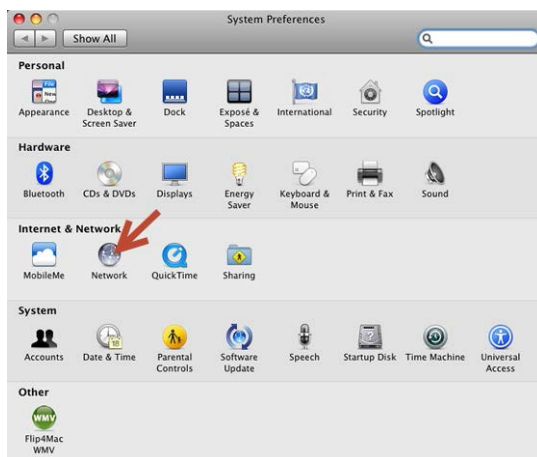
Prior to arriving for your camp or conference, please provide your Camp/Conference Planner with the hardware address for all devices you plan to use during your camp/conference so that wired internet accounts may be set up in advance. If we do not receive this information within 48 hours of your arrival, we cannot guarantee wired network connectivity. Follow these instructions to obtain the hardware address for your devices.

To find the wired hardware address on a Mac laptop/desktop:

1. Click the **System Preferences** icon in the dock.



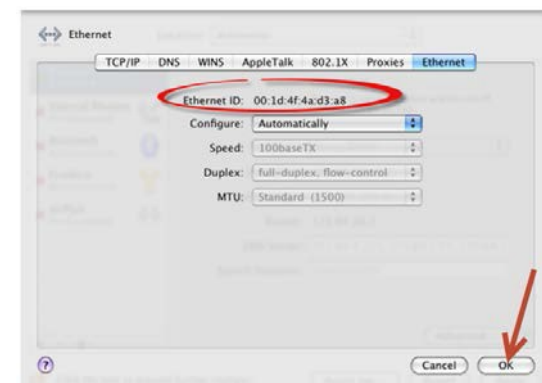
2. In the Internet & Network section, click **Network**.



3. In the Network system preferences window, make sure that **Ethernet** is selected. Click **Advanced**.



4. Click the **Ethernet** tab. Write down the Ethernet ID displayed and then click OK.



To find the wireless hardware address on a Mac laptop/desktop:

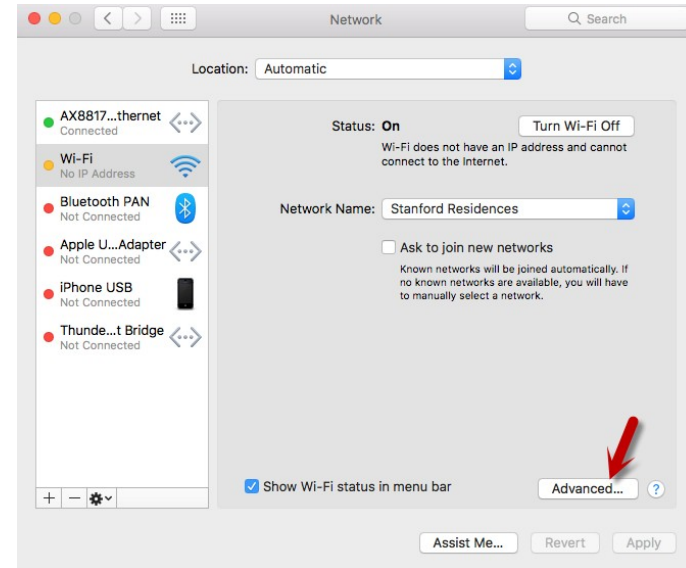
1. Click the **System Preferences** icon in the dock.



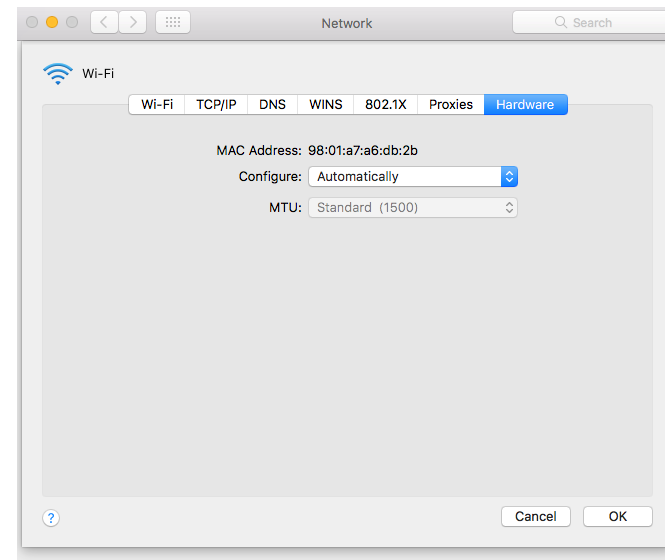
2. In the Internet & Network section, click **Network**.



3. In the Network system preferences window, make sure that **Wi-Fi** is selected. Click **Advanced**.

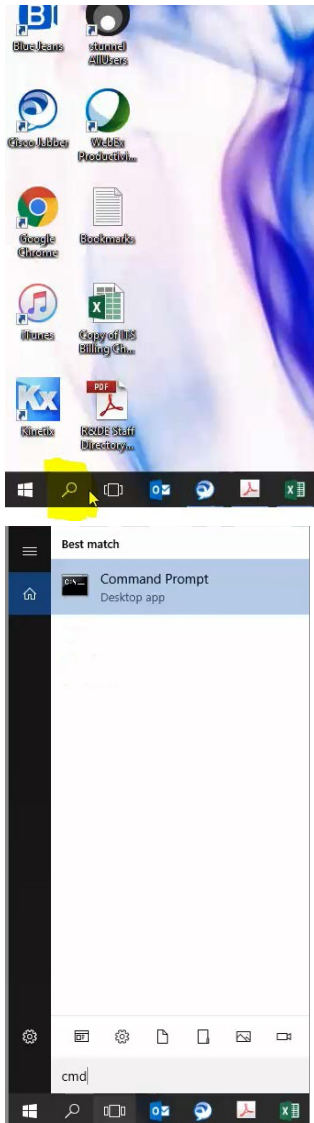


4. Click the **Hardware** tab. Write down the MAC ID displayed and then click OK.

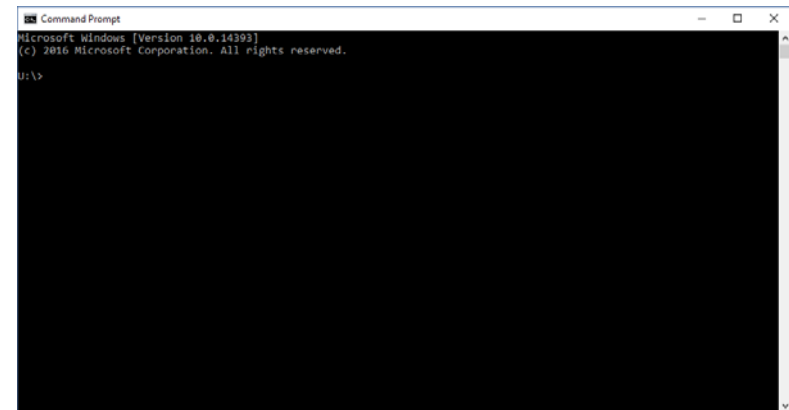


To find the wireless and wired hardware addresses' on a Windows laptop/desktop:

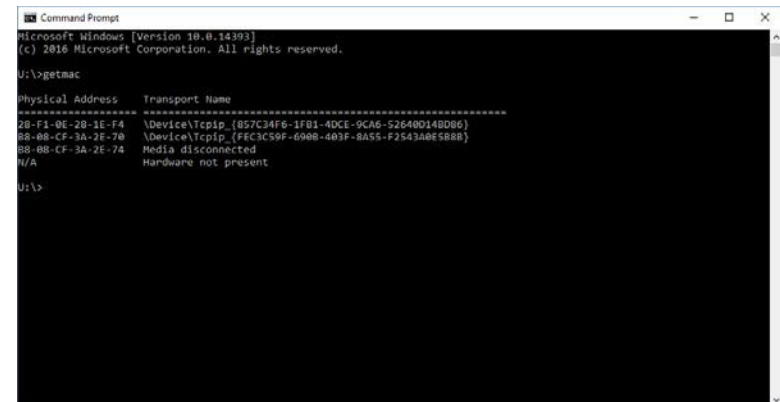
1. Open a Command prompt by typing cmd from the task bar of your laptop.



2. A screen like the one below should appear.



3. At the command line type getmac and press enter.



4. Addresses will then populate in the following form:

28-F1-0E-xx-xx-xx-xx

5. Provide all the addresses that populate to ensure correct connectivity is given.