

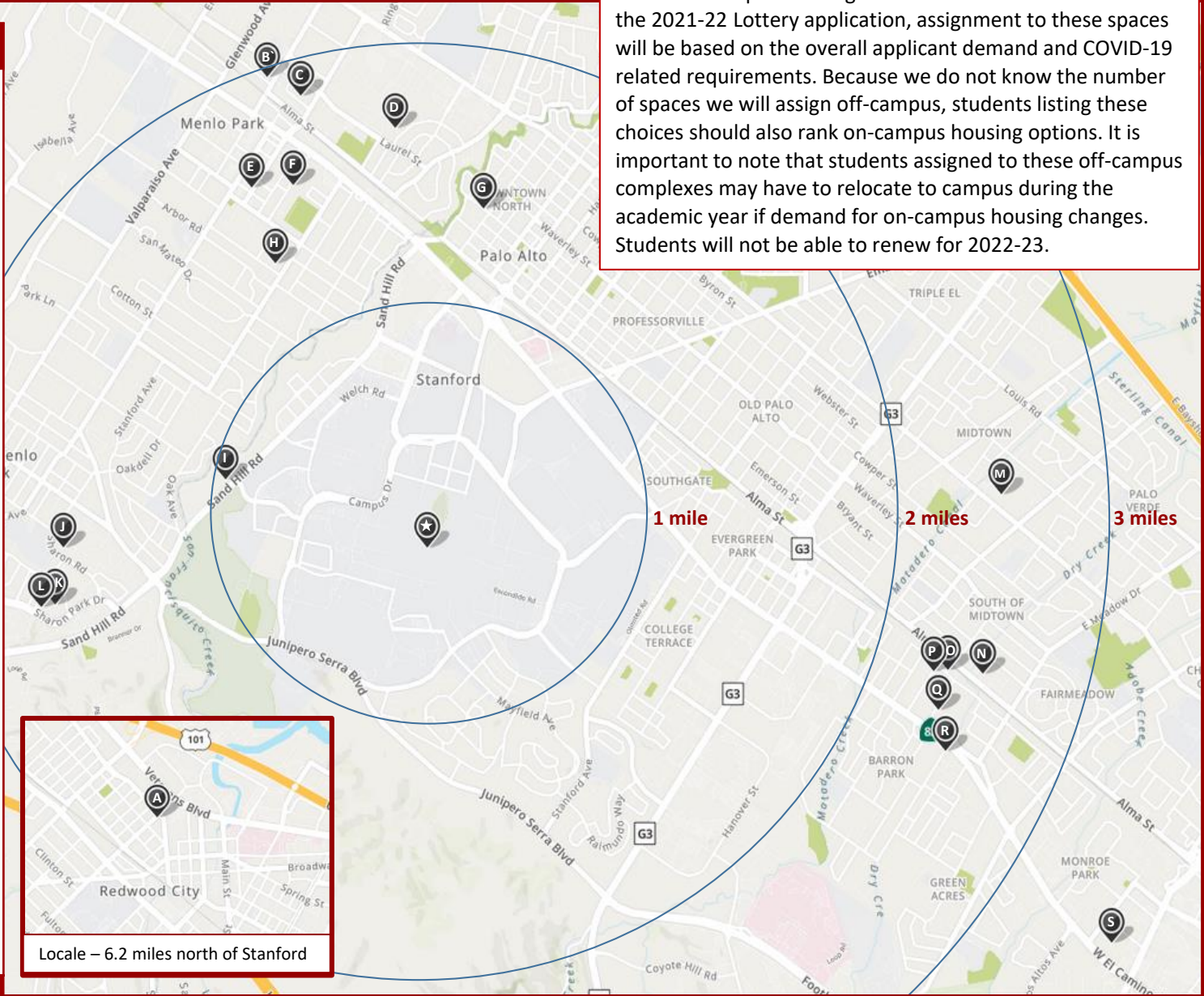
OFF-CAMPUS HOUSING OPTIONS FOR 2021-2022

IMPORTANT NOTE ABOUT OFF-CAMPUS HOUSING:

While off-campus housing choices will be available to rank on the 2021-22 Lottery application, assignment to these spaces will be based on the overall applicant demand and COVID-19 related requirements. Because we do not know the number of spaces we will assign off-campus, students listing these choices should also rank on-campus housing options. It is important to note that students assigned to these off-campus complexes may have to relocate to campus during the academic year if demand for on-campus housing changes. Students will not be able to renew for 2022-23.

Off-Campus Housing Locations

- A** Locale
- B** Laurel Grove Apartments
- C** Noel Oaks Apartment Homes
- D** Waverley Street Apartments
- E** 825 Menlo Apartments
- F** Menlo Park West
- G** Hawthorne Apartments
- H** Middle Park
- I** Oak Creek Apartments
- J** Sand Hill Place
- K** Seven Oaks
- L** Sharon Grove
- M** Midfield Apartments
- N** Stanford Villa
- O** Boardwalk Park Place
- P** 241 Curtner Avenue
- Q** Merrilee Terrace
- R** Montage Apartments
- S** Domus on the Boulevard



Locale – 6.2 miles north of Stanford